

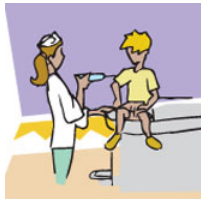
Bradford on Avon Health Centre Newsletter



September 2007

Edition 13

FLU CLINICS



It is that time of year again!

We shall be holding our Flu Vaccination Clinics on the following days:-

Saturday 13 October
Saturday 20 October
Saturday 17 November

Please telephone The Health Centre for an appointment from Friday 28th September 2007 onwards.

A campaign poster & information leaflets will be in our main waiting areas from Monday 19th September and will include:-

- Times and locations of clinic
- The at risk categories to see if you are eligible
- Other flu information

RESEARCH TRIALS

The doctors would like to take this opportunity to thank all the patients who took part in the On Target (Coronary Heart Disease) study which is now coming to an end after running over the past five years. We greatly appreciate your participation in this important study.

We are currently recruiting for studies in Osteoarthritis, Diabetes, Asthma and Prevention of Coronary Heart Disease, and will shortly be commencing a new study in Hypertension.

If you are interested in finding out more about any of the above studies please feel free to contact one of our Research Nurses, Sue Matthews on 01225 860014 or Beverley Lewis-Belza on 01225 860033 or ask to speak to one of them whilst you are in The Health Centre. You can of course also speak to any of the doctors if you would like more information.

Details of all current studies can be found on our Clinical Trials Noticeboards located within the waiting areas at The Health Centre in both Bradford on Avon and Winsley.

DOTTY DAY **FRIDAY 5 OCTOBER 2007**



We are going to be doing something Dotty for our local Dorothy House hospice to support their Dotty Day campaign. Staff can choose to wear something dotty and donate £1.00

WOULD YOU LIKE TO SUPPORT THE CAMPAIGN?

There will be a dot to dot prize draw for children - 50p a go on the day
Guess the number of sweets in a jar - 20p a go on the day



THE HEALTH CENTRE TEAM

WELCOME

We are pleased to announce the appointment of a new Practice Nurse, Gail Oughtibridge, who started work on 6 September. Gail will be covering treatment room work and travel clinics.

We also welcome Arlene Marsh who joins the nursing team as a Health Care Assistant.

We are delighted to announce that Gina Bryant will be joining our management team on 1 October as a part-time Deputy Practice Manager, this will be a shared post with Eastleigh Surgery at Westbury. Gina has a wealth of experience and knowledge and will be a tremendous addition to our team.

Also joining the Management team is Mark Dickson, our new Finance Administrator who joined us on 6 August. We will be sharing Mark with Eastleigh Surgery in Westbury as he has been doing their accounts for a few years now.

Our new management structure is now therefore:-

- GP Partners
- Angie Benford—Business Manager
- Gina Bryant—Deputy Practice Manager
- Dan Knowlson—IT Manager
- Mark Dickson—Finance Manager
- Marian Carpenter—Clinical Nurse Manager
- Michelle Coleman—Office Manager
- Julie Combe—Dispensary Manager
- Melissa James-Howe—Dental Supervisor



CONGRATULATIONS

Congratulations to Glenda Yates who has been working with us since December 2006 as a locum nurse with the Research team. She has just achieved her Overseas Nursing programme. Having trained and worked in New Zealand, Glenda has had to complete a challenging and detailed course via Bournemouth University, to gain her registered nurse qualification here in the UK! Well done Glenda!

GREEN TREE HEALTH



We are pleased to announce a new Chiroprapist at Green Tree Health. Her name is Gina Bhagwat-Brown and she is replacing Larissa Ross who unfortunately left us in August.

Gina will be working at Green Tree Health every Thursday. If you require an appointment please telephone **01225 867098**

MINOR INJURY UNITS

The Minor Injury Units currently located in Devizes, Warminster, Savernake, Melksham and Westbury will close on 30 September 2007, at their normal closing times.

From Monday 1 October 2007 Trowbridge Minor Injury Unit will be open 24 hours, and Chippenham Minor Injury Unit will be open 7am—1am

RUH PATIENT VISITING ARRANGEMENTS HAVE CHANGED

There have been various changes at the RUH for visiting patients who are in hospital. You are now allowed to visit between 2.00pm and 3.30pm and 6pm to 8pm. This does not apply to the Children's Wards, Maternity Unit or Intensive Care Unit.

FOR FULL INFORMATION
PLEASE SEE POSTER IN MAIN WAITING AREAS